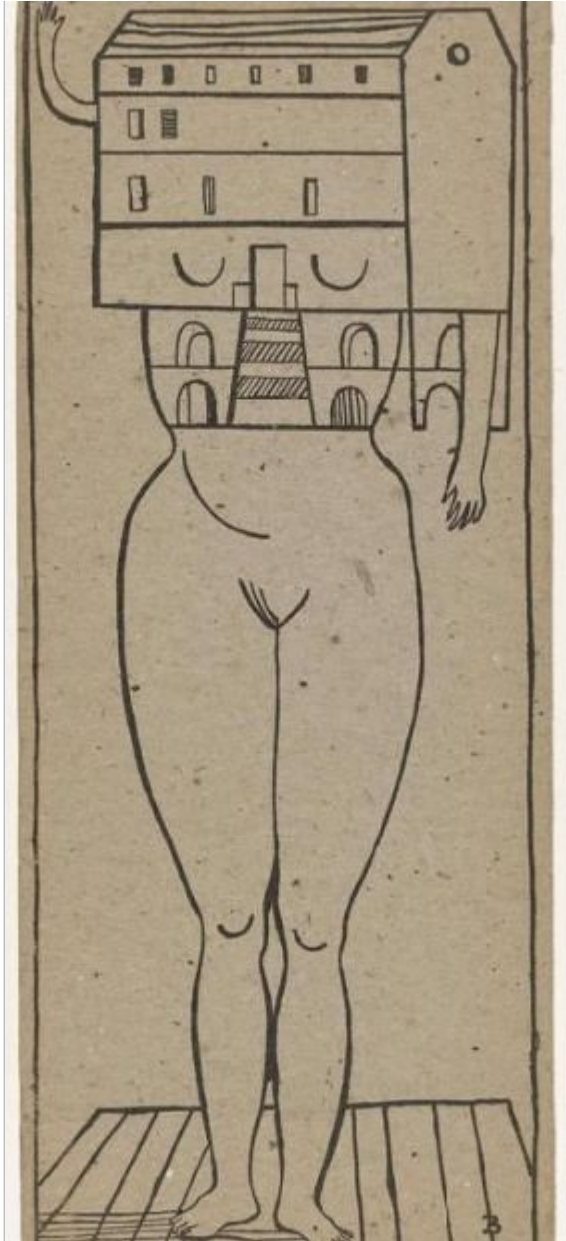


BIOMAIISON

workshop clarissa ribeiro



"I consider this perfect... it brings the personal together with the environment... it is a symbiosis of one with the universe... it is a kind of acceptance." The figure "is serene... it doesn't mind."
Louise Bourgeois

https://www.moma.org/s/lb/collection_lb/objbydate/objbydate_endyr-1979_sov_page-215_image-1.html

It is covid19 quarantine and the workshop invites for a reflection on the invisible cross-scale interactions and integrations within the home environment mediated by our bodies. It is inspired by the series Femme Maison by Louise Bourgeois. We will build together cross-scale exquisite corpses combining extruded microscopic scans of home surfaces with bodies and body parts' 3D models using two free online platforms – <http://www.embossify.com/> and <https://app.sketchup.com/app#>

Additionally we can visualize the final models in AR and VR or even produce paper sculptures with flatten versions of the 3D models.

Hi guys, my name is Clarissa Ribeiro, I'm an artist and researcher based in Brazil, and together with the Art|Sci team I'll be leading a workshop inspired by the series Femme Maison by Louise Bourgeois and we will build together cross-scale exquisite corpses combining extruded microscopic scans of home surfaces with bodies and body parts' 3D models that can be visualized in AR and VR using three free online platforms – sketchup app, embossify and 3dless. See u there!

NOT IN MoMA'S COLLECTION



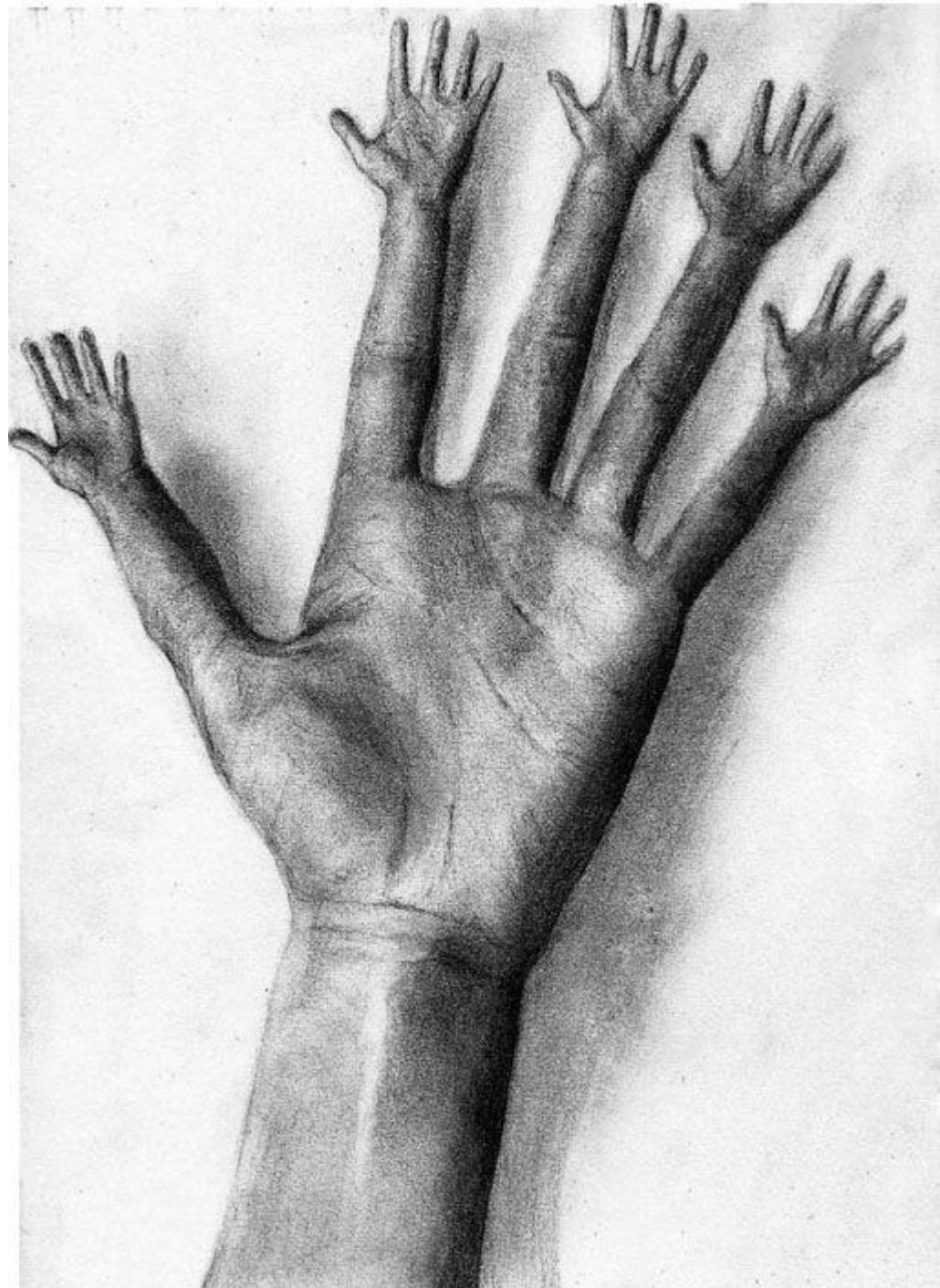
Femme Maison

1982

Medium: Plastic doll and clay

Dimensions: overall: 16 x 5 1/4 x 2" (40.6 x 13.3 x 5.1 cm)

© The Easton Foundation/VAGA at ARS, NY



Guadalajara's TechMind Immortalizes Blowhard Hurricane Patricia in 3D Print

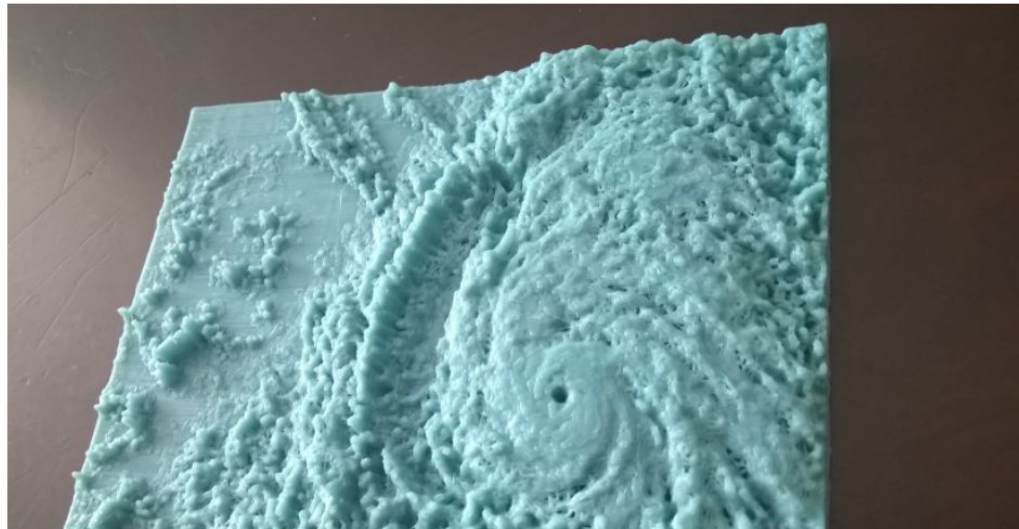
October 26, 2015 • by Bridget O'Neal • 3D Design • 3D Printing




ADDITIVE MANUFACTURING
RESEARCH & ADVISORY SERVICES

SmarTech
ANALYTICS

Learn More



Site Sponsor



dynamism



EOS

Industrial
3D Printing
Solutions

Learn More

3DPRINT.COM PRO

<https://3dprint.com/102330/techmind-hurricane-patricia/>